

# **BROADWICK** WORKS

A unique and characterful space  
located in the heart of Soho.



FRAMEWORKS



45 Broadwick Street is a hidden gem - discreetly tucked away behind a gated passageway it offers large, bright and surprisingly peaceful workspace in the middle of bustling Soho. Formerly the home of world-renowned Eel Pie recording studios, the building is full of character with vaulted ceilings, exposed rafters and a central glass atrium overhanging the industrial steel staircase. It's a creative space, designed for businesses who want a bespoke HQ product.

## AVAILABILITY









2025

UNIT A	2,566 SQFT	JULY 2025
UNIT B	1,136 SQFT	FLEXIBLE
UNIT C	2,272 SQFT	SOLD
UNIT D	1,307 SQFT	SOLD





## FACILITIES

-  Fully furnished
-  Private kitchen
-  Private meeting rooms
-  Ultra-fast internet
-  Air conditioning
-  Daily cleaning
-  Showers
-  24/7 access



Our serviced workspaces are all-inclusive with no hidden fees. This also includes rent, business rates and service charges.

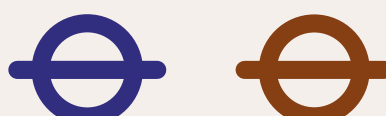


# LOCATION

SOHO, W1F

Nestled right in the heart of Soho, 45 Broadwick Street is a stone's throw from the iconic shopping lanes of Carnaby Street, the food stalls of Berwick Street Market and the lively bars of Old Compton Street. Members of this building will most likely be rubbing shoulders with businesses from creative, media and retail industries; all looking to soak up the vibrant and dynamic spirit of London's most exciting district.



	OXFORD CIRCUS (A) 6 MINS
	TOTTENHAM COURT RD (B) 9 MINS
	PICCADILLY CIRCUS (C) 6 MINS

## CONTACT US

SALES TEAM

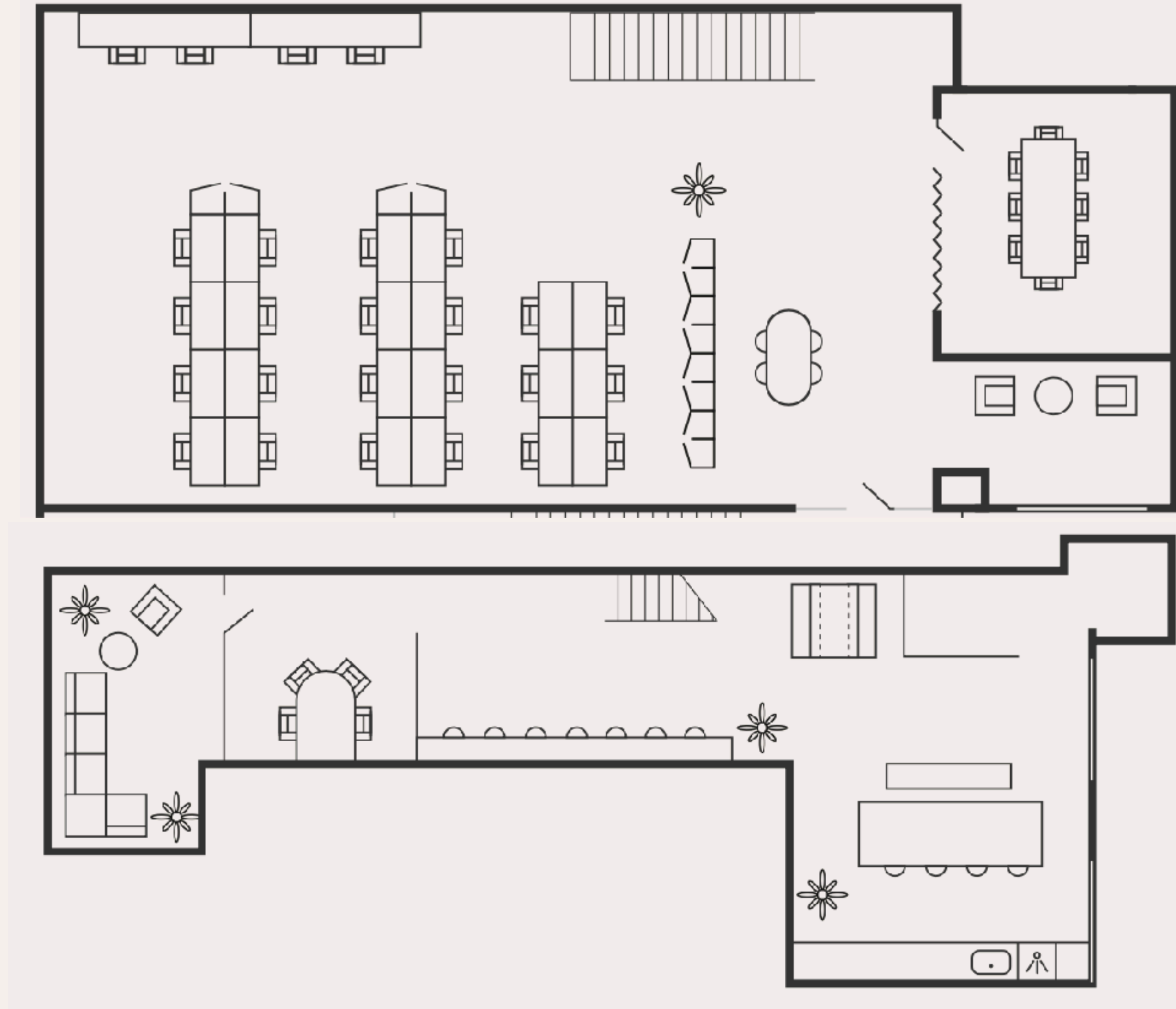
E : SALES@FRAMEWORKS.SPACE

T : 0203 581 5752

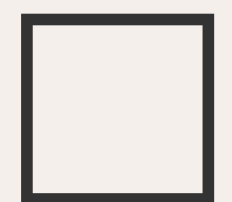
W : WWW.FRAMEWORKS.SPACE

FRAMEWORKS

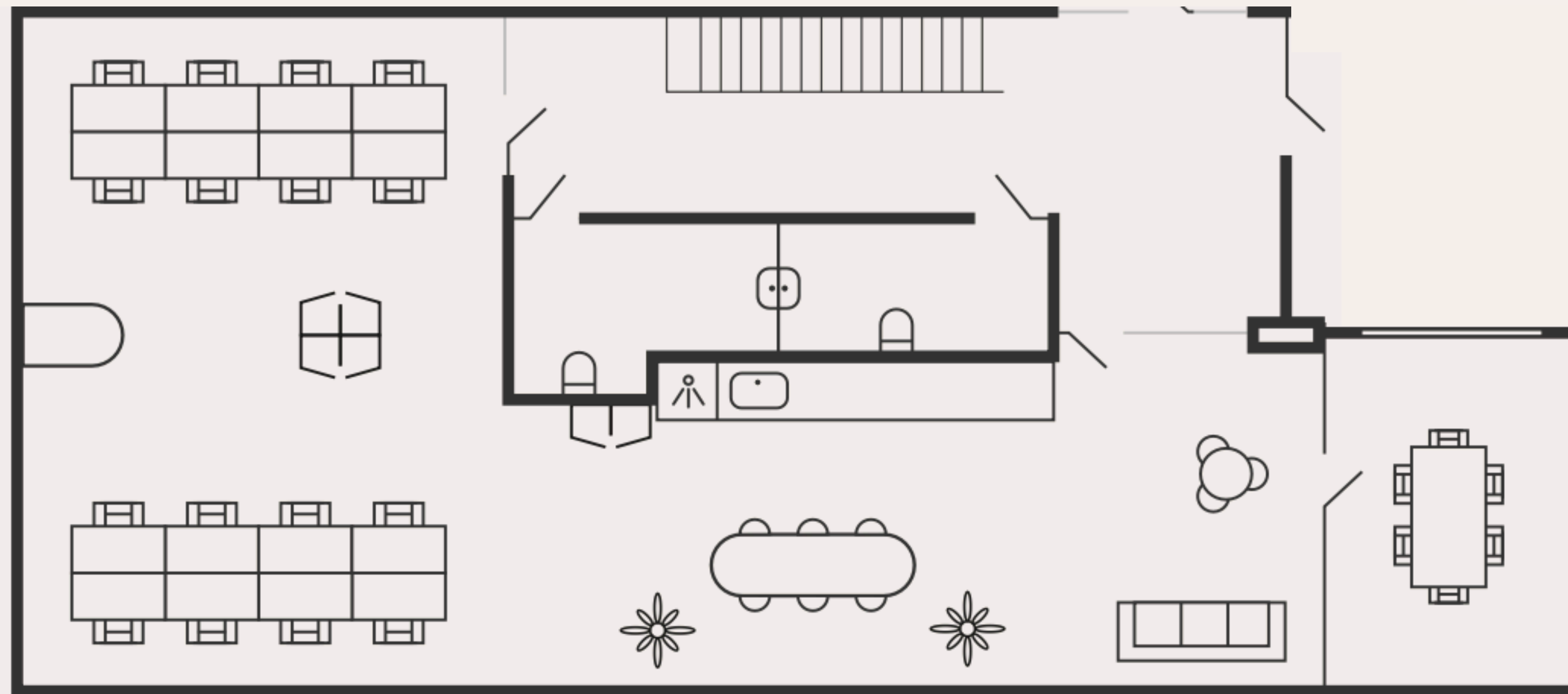
**PLAN**  
UNIT B



F  
W



**PLAN**  
UNIT B



F  
W