

OXFORD WORKS



129 Oxford Street
London, W1D 2HU

About

OXFORD WORKS delivers highly functional, bespoke and cost-effective workspace for organisations in need of a West End HQ.

The building comprises only 4 offices and a shared roof terrace area. Members benefit from having private kitchen and meeting facilities alongside a spacious open-plan work area that can be fully customised to fit their brand.

All studios are available on a fully managed basis, with Frameworks handling everything for a single, all-inclusive monthly fee.



by FRAMEWORKS
30 Berwick Street, Soho
W1F 8RH, 0203 581 5752

Design

The space has a neutral monochrome colour scheme that can fit any overlayed brand identity.

Frameworks supply all furniture, including desks, task chairs, meeting tables and lounge seating.

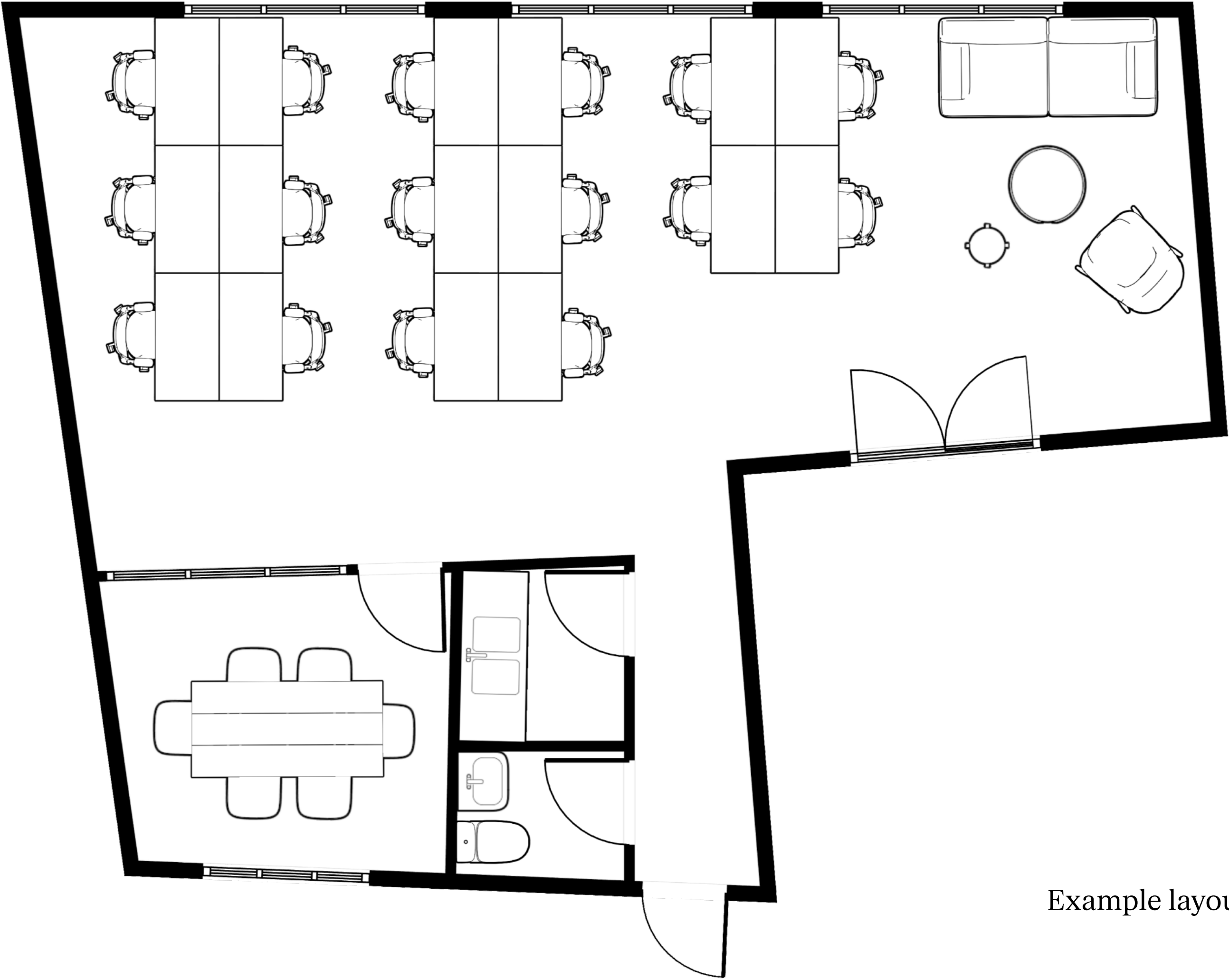
We work with clients to customise their space in terms of layout and aesthetic.



Floorplan

The building contains only 4 office units in total. The unit on Floor 2 is currently available.

- Floor 2
- 646 sqft
- 18 desk max capacity
- 1 meeting room
- Private kitchen
- Communal roof terrace



Example layout

Specification

Our Licence Agreements include a recurring monthly fee that covers the following items and spec:

- Occupation of a spectacular self-contained dual-aspect unit with floor-to-ceiling height of up to 3.5m
- Ongoing facilities management and client services via our Operations team
- All building costs such as rent, business rates, utilities, etc.
- 🏠 Comprehensive furnishing with work-ready task areas and fully-equipped meeting, breakout and dining spaces
- ✱ Dedicated air conditioning and air-handling system
- 🍳 Fitted private kitchen
- 👤 Private meeting rooms and phone booths (where shown)
- 📶 Full fibre connectivity with 100MB allocated bandwidth (adjustable), ethernet provision and a dedicated cabinet
- 🕒 24/7 access via a Paxton security system
- 🧹 Daily cleaning and waste management



Location

The building is located between Tottenham Court Road and Oxford Circus tubes, with mainline stations (Euston, King's Cross, Waterloo) accessible in under 30 minutes.

The offices overlook London's premier retail district and the workspace borders Soho's vibrant mix of bars, restaurants and entertainment venues.

- 1. Oxford Circus (4 mins)
- 2. Tottenham Court Rd (5 mins)
- 3. Piccadilly Circus (8 mins)



FRAMEWORKS by FRAMEWORKS
30 Berwick Street, Soho
W1F 8RH, 0203 581 5752